



Supplying Panelbeaters Since 1947

RA JOHNSTONE
RA JOHNSTONE & CO LTD

www.raj.co.nz

Phone: 09-25000 95

E - mail: sales@raj.co.nz

Address: 33 Ha Crescent, Wiri, Auckland

PLEASE NOTE:
Photos are not to scale.

CHART

A

1. XMAS TREE FASTENERS 2. CANOE FASTENERS



XMAS TREE FASTENERS



A1

Head Size - 15mm
Length - 15mm
Hole size 4.9 - 5.1mm



A2

Head Size - 17mm
Length - 16.5mm
Hole size 6.8 - 7.2mm
Selected Colours



A3

Head Size - 18mm
Length - 19.6mm
Hole size 7.8 - 8.1mm



A3GR

Head Size - 18mm
Length - 21mm
Hole size 6mm
Colour - Grey



A4

Head Size - 18mm
Length - 25mm
Hole size 8mm
Selected Colours



A5W

Head Size - 15mm
Length - 16mm
Hole size 6mm
Colour - White



A6

Head Size - 12mm
Length - 35mm
Hole size - 6 - 6.8mm
Selected Colours



A7

Head Size - 21mm
Length - 22mm
Hole size 10mm



A8

Head Size - 25mm
Length - 28mm
Hole size 6mm



A9

Head Size - 25mm
Length - 20mm
Hole size 8mm



A10GR

Head Size - 26mm
Length - 25mm
Hole size 8mm
Colour - Grey



A11

Head Size - 17mm
Length - 28mm
Hole size 8mm



0194

Head Size - 35mm
Length - 36mm
Hole size - 6 - 6.8mm

RAJ FASTENERS

Supplying Panelbeaters Since 1947

RA JOHNSTONE
RA JOHNSTONE & CO LTD

WE ARE **NATION WIDE**

CANOE FASTENERS



0084

Head Dia - 11mm
Stem Length - 14mm
Fits Hole 6mm



P247-074

Head Dia - 14mm
Stem Length - 10mm
Fits Hole 5mm
Ford / Mazda



14737

Head Dia - 13mm
Stem Length - 15mm
Fits Hole 5mm
Toyota / Nissan



M954

Head Dia - 9mm
Stem Length - 7mm
Fits Hole 5.5mm
Mazda



18114

Head Dia - 10mm
Stem Length - 10mm
Fits Hole 6mm
Honda



17205

Head Dia - 14mm
Stem Length - 15mm
Fits Hole 6mm
Honda



0013

Head Dia - 11mm
Stem Length - 14mm
Fits Hole 6mm



P247-073

Head Dia - 18mm
Stem Length - 15mm
Fits Hole 7mm
Honda



P247-069

Head Dia - 30mm
Stem Length - 20mm
Fits Hole 7mm
Toyota



B900

Head Dia - 16mm
Stem Length - 27mm
Fits Hole 7mm
Selected Colours



T599

Head Dia - 13x7mm
Stem Length - 14.5mm
Fits Hole 7.4mm
Toyota



B243

Head Dia - 14mm
Stem Length - 16mm
Fits Hole 8mm
Selected Colours



T595

Head Dia - 30mm
Stem Length - 15mm
Fits Hole 11mm
Toyota

Supplying Panelbeaters Since 1947

RA JOHNSTONE
RA JOHNSTONE & CO LTD

is one of New Zealand's largest suppliers to the panelbeating and spray painting industry of consumable products, tools and equipment.

WE SUPPLY:

- Abrasives
- Primers & Clears
- Spray Painting Consumables
- Panelbeating Consumables
- Tools & Equipment
- Polishing & Cutting Compounds
- Automotive Trim Fasteners
- Automotive Rubbers & Trims
- Body Hardware

Please Note:

The sizes given for the fasteners are approximations only for your assistance. We do not do cash refunds so please choose carefully.

NO PART OF THIS DOCUMENT MAY BE REPRODUCED, TRANSMITTED, TRANSCRIBED, STORED IN ANY LANGUAGE, IN ANY FORM BY ANY MEANS, WITHOUT THE PERMISSION OF RA JOHNSTONE & CO LTD. COPYRIGHT© 2013. WE RESERVE THE RIGHT TO WITHDRAW ANY PRODUCT FOR SALE.



Supplying Panelbeaters Since 1947

RA JOHNSTONE
RA JOHNSTONE & CO LTD

www.raj.co.nz Phone: 09-25000 95

E - mail: sales@raj.co.nz

Address: 33 Ha Crescent, Wiri, Auckland

PLEASE NOTE:
Photos are not to scale.

CHART
B

1. PUSH-IN FASTENERS



PUSH-IN FASTENERS



19503

Head Dia - 10mm
Stem Length - 13mm
Fits Hole 5mm
Mitsubishi



P247-491

Head Dia - 15mm
Stem Length - 11mm
Fits Hole 6mm
Nissan / Honda



SC54

Head Dia - 15mm
Stem Length - 17mm
Fits Hole 6mm
Available in Grey



T792

Head Dia - 18mm
Stem Length - 8mm
Fits Hole 6mm
Toyota / Lexus



14698

Head Dia - 18mm
Stem Length - 11mm
Fits Hole 6mm
Honda



F114

Head Dia - 17.5mm
Stem Length - 17.5mm
Fits Hole 6.4mm
Mazda / Ford



14697

Head Dia - 14mm
Stem Length - 13mm
Fits Hole 7mm
Honda / Mazda



17191

Head Dia - 17mm
Stem Length - 10mm
Fits Hole 7mm
Mitsubishi



SC15

Head Dia - 14x22mm
Stem Length - 9mm
Fits Hole 7mm



P247-490

Head Dia - 20mm
Stem Length - 10mm
Fits Hole 8mm
Honda / Nissan / Mazda



10378

Head Dia - 15mm
Stem Length - 13mm
Fits Hole 8mm
G.M.



17632

Head Dia - 18mm
Stem Length - 12mm
Fits Hole 8mm
Mazda



P247-494

Head Dia - 20mm
Stem Length - 20mm
Fits Hole 8mm
Nissan



P247-500

Head Dia - 20mm
Stem Length - 23mm
Fits Hole 8mm



P247-667

Head Dia - 20mm
Stem Length - 10mm
Fits Square Hole 9mm
Toyota HI LUX



17206

Head Dia - 15mm
Stem Length - 12mm
Fits Hole 9mm
Toyota



18939

Head Dia - 18mm
Stem Length - 23mm
Fits Hole 9mm
Toyota / Lexus



17988

Head Dia - 19mm
Stem Length - 26mm
Fits Hole 9mm
Toyota / Lexus



17267

Head Dia - 20mm
Stem Length - 15mm
Fits Hole 10mm
Honda



18119

Head Dia - 20mm
Stem Length - 25mm
Fits Hole 10mm Honda



17143

Head Dia - 20mm
Stem Length - 27mm
Fits Hole 10mm Honda



17144

Head Dia - 20mm
Stem Length - 24mm
Fits Hole 10mm Honda



16783

Head Dia - 12mm
Stem Length - 8mm
Fits Hole 6mm
Nissan



P247-164

Head Dia - 18mm
Stem Length - 18.7mm
Fits Hole 6mm
Mazda



20248

Head Dia - 20mm
Stem Length - 17mm
Fits Hole 6.3mm
BMW



17383

Head Dia - 11mm
Stem Length - 14mm
Fits Hole 7mm



17162

Head Dia - 15mm
Stem Length - 13mm
Fits Hole 7mm
G.M.



16784

Head Dia - 18mm
Stem Length - 11mm
Fits Hole 7mm
Nissan.



1800

Head Dia - 20mm
Stem Length - 8mm
Fits Hole 7mm
Toyota



20335

Head Dia - 18mm
Stem Length - 7mm
Fits Hole 7mm
RAV4



P247-660

Head Dia - 20mm
Stem Length - 10mm
Fits Hole 7mm Toyota



16782

Head Dia - 20mm
Stem Length - 14mm
Fits Hole 8mm Honda / Nissan



N843

Head Dia - 17.8mm
Stem Length - 20mm
Fits Hole 7.7mm Nissan



19274

Head Dia - 20mm
Stem Length - 9mm
Fits Hole 8mm Nissan



19118

Head Dia - 20mm
Stem Length - 10mm
Fits Hole 8mm Honda



20340

Head Dia - 20mm
Stem Length - 11mm
Fits Hole 8mm Honda

Please Note:

The sizes given for the fasteners are approximations only for your assistance. We do not do cash refunds so please choose carefully.

NO PART OF THIS DOCUMENT MAY BE REPRODUCED, TRANSMITTED, TRANSCRIBED, STORED IN ANY LANGUAGE, IN ANY FORM BY ANY MEANS, WITHOUT THE PERMISSION OF RA JOHNSTONE & CO LTD. COPYRIGHT© 2013. WE RESERVE THE RIGHT TO WITHDRAW ANY PRODUCT FOR SALE.



Supplying Panelbeaters Since 1947

RA JOHNSTONE
RA JOHNSTONE & CO LTD

www.raj.co.nz Phone: 09-25000 95

E - mail: sales@raj.co.nz

Address: 33 Ha Crescent, Wiri, Auckland

PLEASE NOTE:
Photos are not to scale.

CHART



1. PUSH-IN FASTENERS CONT. 2. CLIP TOOLS 3. HONDA COWL PANEL CLIPS 4. BODY SHIMS
5. NYLON BLIND RIVETS 6. PLASTIC RIVETS 7. MISCELLANEOUS



PUSH-IN FASTENERS CONT.



17347

Head Dia - 20mm
Stem Length - 12mm
Fits Hole 8mm
Nissan



19453

Head Dia - 18mm
Stem Length - 15mm
Fits Hole 8mm
Honda



17222

Head Dia - 15mm
Stem Length - 20mm
Fits Hole 8mm
Holden



P247-126

Head Dia - 20mm
Stem Length - 20mm
Fits Hole 8mm
Holden



H1880

Head Dia - 18mm
Stem Length - 12mm
Fits Hole 9mm
Honda / Mitsubishi



H1302

Head Dia - 20mm
Stem Length - 14mm
Fits Hole 9.7mm
Honda Accord, GRV, Jazz

HONDA COWL PANEL CLIPS



18873

Head Dia 18mm
Stem Length 28mm
Fits Hole 9mm Toyota



19246

Head Dia - 18mm
Stem Length - 15mm
Fits Hole 10mm
Nissan



19300

Head Dia - 20mm
Stem Length - 18mm
Fits Hole 10mm
Honda



P247-762

Head Dia - 18mm
Stem Length - 10mm
Fits Hole 10mm
Toyota



18165

Head Dia - 17mm
Stem Length - 9mm
Fits Hole 8mm
Honda Cowl Panel Retainer



17192

Head Dia - 18mm
Stem Length - 14mm
Fits Hole 8mm
Honda Cowl Panel Retainer

BODY SHIMS



20448

Body Shim 1/16" (1.6mm)
Thick Metal



20449

Body Shim 1/8" (3.17mm)
Thick Metal



CLIP TOOLS

KTV4

An assortment of different sizes in a foam holder that is ideal for the tool box.

see **PRODUCT GROUP 17**

NYLON BLIND RIVETS



NYLON

NBR266

Fits Hole - 4mm
Panel Range (Grip) - 6 - 10.5mm
Length 24mm
FORD



NYLON

NBR300

Fits Hole 13/64"(5.1mm)
Flange Diameter 12mm
Length 17.5mm
Panel Range (Grip) 1/8"-15/64" (3.2- 5.9mm)
GM - CHRYSLER



NYLON

NBR301

Fits Hole 1/4"(6.4mm)
Flange Diameter 17mm
Length 26mm
Panel Range (Grip) - 5/32"-13/32" (3.9-10.3mm)
GM FORD CHRYSLER



NYLON

NBR302

Fits Hole 1/4"(6.4mm)
Flange Diameter 13mm
Length 26mm
Panel Range (Grip) - 5/32"-13/32"(3.9-10.3mm)
GM FORD CHRYSLER



NYLON

NBR303

Fits Hole 17/64"(6.7mm)
Flange Diameter 18mm
Length 18mm
Panel Range (Grip) 3/32"-3/16" (2.4- 4.8mm)
GM VW



NYLON

NBR304

Fits Hole 13/64"(5.1mm)
Flange Diameter 12mm
Length 23mm
Panel Range (Grip) 15/64"-25/64" (5.9- 10mm)
GM VW



RSGUN

PLASTIC RIVETS



0042

Length - 6mm
Fits Hole 4.5mm
Black or White



0051

Length - 10mm
Fits Hole 5mm
Black



0075

Length - 15mm
Fits Hole 6mm
Black or White



HS2

Door Handle Clip
Metal



14359

Colour - Grey (Left)
Holds 4mm Rods
Fits Hole 6mm



14365

Colour - Blue (Right)
Holds 4mm Rods
Fits Hole 6mm

Please Note:

The sizes given for the fasteners are approximations only for your assistance. We do not do cash refunds so please choose carefully.

NO PART OF THIS DOCUMENT MAY BE REPRODUCED, TRANSMITTED, TRANSCRIBED, STORED IN ANY LANGUAGE, IN ANY FORM BY ANY MEANS, WITHOUT THE PERMISSION OF RA JOHNSTONE & CO LTD. COPYRIGHT© 2013. WE RESERVE THE RIGHT TO WITHDRAW ANY PRODUCT FOR SALE.

1. GRILLE CLIPS 2. COMMODORE HEADLIGHT 3. BADGE CLIPS 4. MOULDING CLIPS
5. CUT DOWN CLIPS 6. TSET 7. CLIPSET



MOULDING CLIPS



P246-112

Universal 'T'
Bolt Clip
#10.24 x 23/32"
9mm Wide, 19mm Long



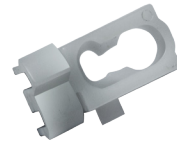
P246-120

Universal 'T'
Bolt Clip
#10.24 x 1/2"
12mm Wide, 27mm Long



P246-122

Universal 'T'
Bolt Clip
#10.24 x 5/8"
15mm Wide, 42mm Long



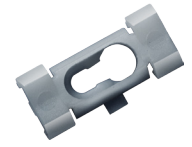
P246-378

Universal Moulding
21mm x 10mm
G.M.



P246-394

Universal Moulding
25mm x 12mm



P246-390

Universal Moulding
25mm x 9mm
G.M.



13141

Moulding Insert Mercedes
Head Dia 11mm
Stem 14mm
Fits 10 mm Hole



B319

Moulding Clip
with rubber Seal



H1227

Top Head 11 x 15mm
Bottom Head 16mm
Stem 10mm, Fits 8mm
Holden



T457

Stem Length - 17mm
Stem Dia - 17mm
Toyota (Blue)



T458

Stem Length - 17mm
Stem Dia - 13mm
Toyota (Red)



T531

Stem Length - 10mm
Head Dia - 17mm
Toyota



T530

Wheel Flare Moulding Clip
With Sealer (Toyota)
Head Dia: 17mm
Stem Length: 17mm



T793

Overall Length - 20.8mm
Top Head Dia - 11.7mm
Bottom Head Dia - 18.3mm
Stem Dia: 8mm
Toyota & Lexus



H785

Top Head 10 x 12mm
Bottom Head 14 x 20mm
Entourage, Tucson,
Kia Optima, Sportage



T1270

Toyota Rocker Panel
Moulding Clip
Fits 17mm Square Hole
Head Size 37mm x 28mm



T1016

Head 13x26mm
Stem - 24mm
Toyota Hi Lux



T501

Rocker Panel Moulding Clip
Head Dia: 18mm
Stem Length: 9mm
Toyota

GRILLE CLIPS



17440

Body Side Moulding Clip
Legend
Honda



P246-400

Metal Cut Down Clip
63mm Long x 21mm Wide
5mm x 21mm Bolt



P247-157

Grille Clip
Ford, Honda, GM,
Mitsubishi, Mazda



17195

Grille Clip
Camry/Celica
Toyota



17194

Grille Clip
13mm wide
23mm Long
Toyota



16860

Grille Clip
Grey
Nissan

CLIPCASE

An assortment of the most popular 26 types of automotive trim fasteners



BULBCASE

An assortment of 12 popular Automotive Bulbs



BOLTCASE

An assortment of popular Rivets, Plastic Rivets, Guard Bolts, Self Tapper Screws, Washers, Number Plate Bolts



BADGE CLIPS



SFP 0212
SFP 0213
SFP 1722

Push-On	Pin Size
14.2mm x 9.6mm	4mm
15.7mm x 9.6mm	5mm
11.2mm x 6.0mm	3mm



3502
Nylon Badge Clip



SCL2645
Metal Badge Clip

Please Note:

The sizes given for the fasteners are approximations only for your assistance. We do not do cash refunds so please choose carefully.

NO PART OF THIS DOCUMENT MAY BE REPRODUCED, TRANSMITTED, TRANSCRIBED, STORED IN ANY LANGUAGE, IN ANY FORM BY ANY MEANS, WITHOUT THE PERMISSION OF RA JOHNSTONE & CO LTD. COPYRIGHT© 2013. WE RESERVE THE RIGHT TO WITHDRAW ANY PRODUCT FOR SALE.



Supplying Panelbeaters Since 1947

RA JOHNSTONE
RA JOHNSTONE & CO LTD

www.raj.co.nz Phone: 09-25000 95

E - mail: sales@raj.co.nz

Address: 33 Ha Crescent, Wiri, Auckland

PLEASE NOTE:
Photos are not to scale.

CHART
E

- 1. TRIM / DOOR PANEL FASTENERS
- 2. WEATHERSTRIP CLIPS
- 3. POP ON SCREW COVER
- 4. BUMPER CLIPS
- 5. HOOKS & CANOPY FASTENERS

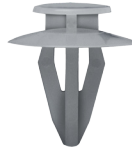


TRIM / DOOR PANEL FASTENERS



3462

Body Plug for B300, R41& P247-136



B300

Upholstery Clip Fits 3462 Plug



P247-136

Trim Panel Clip



3472

Panel Clip



B295

Door Panel Retainer G.M. / Chrysler Stem Length 17mm Hole Size 8mm



R41B

Upholstery Clip Fits 3462 Plug Length - 12mm



14269

Door Panel Retainer 2 Piece (comes with plug) Toyota / Isuzu / Mazda



R39

Trim Panel Retainer Length - 15mm Hole Size - 9mm Honda



B305

Yellow Nylon Trim Panel Retainer Length - 18mm Hole Size - 8mm G.M.



9416

Snap-On Trim Clip Panel Range 1.6mm - 2mm



NS651

Height - 14mm Stem - 9mm Nissan Murano

WEATHERSTRIP CLIPS



GM668

Sill Panel Retaining Clip Holden



GM669

Sill Panel Retaining Clip Holden



Nylon

P247-076

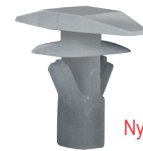
Weather Strip Clip Fits 4mm hole Head 13x5mm Stem - 12mm



Nylon

P247-077

Weather Strip Clip Fits 5mm hole Head 16x7mm Stem - 12mm



Nylon

F173

Fits 5mm hole Head 5x15mm Stem - 10mm Ford / Toyota



Nylon

T1008

Weatherstrip Retainer Head 5x15mm Stem - 10mm



is one of New Zealand's largest suppliers to the panelbeating and spray painting industry of consumable products, tools and equipment.

WE SUPPLY:

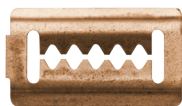
- Abrasives
- Primers & Clears
- Spray Painting Consumables
- Panelbeating Consumables
- Tools & Equipment
- Polishing & Cutting Compounds
- Automotive Trim Fasteners
- Automotive Rubbers & Trims
- Body Hardware

BUMPER CLIPS



W7026

Bar Clip 14mm x 27mm Mitsubishi



W7028

Bar Clip 16mm x 29mm Toyota / Mitsubishi



HMOB & HMOB

Universal Canopy Hook HMOB - Nylon, White HMOB - Nylon, Black



FDHOOK

Ford Ute Canopy Hook With Pins XA - XF



HDHOOK

Holden Ute Canopy Hook With Pins HQ - WB



HDCLEAT

Holden Ute Cleat Front Cover With Pins HQ - WB



17190

Magna Retaining Clip Head 24mm Stem 21mm Hole 13mm Mitsubishi



TC184 & TC254

Tonneau Shock Cord Loop TC184 - 184mm TC254 - 254mm



TC100

Hold Down Knob

Please Note:

The measurements given on the charts are an approximation only for your assistance.



Please Note:

The sizes given for the fasteners are approximations only for your assistance. We do not do cash refunds so please choose carefully.

NO PART OF THIS DOCUMENT MAY BE REPRODUCED, TRANSMITTED, TRANSCRIBED, STORED IN ANY LANGUAGE, IN ANY FORM BY ANY MEANS, WITHOUT THE PERMISSION OF RA JOHNSTONE & CO LTD. COPYRIGHT© 2013. WE RESERVE THE RIGHT TO WITHDRAW ANY PRODUCT FOR SALE.



Supplying Panelbeaters Since 1947

RA JOHNSTONE
RA JOHNSTONE & CO LTD

www.raj.co.nz

Phone: 09-25000 95

E - mail: sales@raj.co.nz

Address: 33 Ha Crescent, Wiri, Auckland

PLEASE NOTE:
Photos are not to scale.

CHART
F

1. SEMS 2. SELF TAPPING SCREWS 3. SPIRE CLIPS 4. NYLON SCREW GROMMETS



SEMS



16589
YELLOW Dicromate
#10x22mm
Washer 15mm O.D.
8mm HEX HEAD



17461
YELLOW Dicromate
#12x18mm
Washer 15mm O.D.
8mm HEX HEAD



15962
YELLOW Dicromate
#14x18mm
Washer 18mm O.D.
10mm HEX HEAD



12359
BLACK Polyseal
#14x15mm
Washer 14mm O.D.
10mm HEX HEAD



12351
BLACK Polyseal
#14x20mm
Washer 17mm O.D.
10mm HEX HEAD



12354
BLACK Polyseal
#14x30mm
Washer 17mm O.D.
10mm HEX HEAD



B112B
BLACK Polyseal
#14x18mm
Fixed Washer
10mm HEX HEAD

Screw Gauges

- #04=2.8mm
- #06=3.5mm
- #08=4.1mm
- #10=4.7mm
- #12=5.4mm
- #14=6.1mm

SELF TAPPING SCREWS



BLACK MUSH
6x1/2", 6x3/4", 8x1/2",
8x3/4", 8x1", 10x1/2",
10x3/4", 10x1",
12x3/4", 12x1", 14 x 1"



ZINC PLATED MUSH
6x1/2", 6x3/4", 6x1",
8x1/2", 8x3/4", 8x1",
10x1/2", 10x3/4", 10x1"



BLACK RAISED COUNTERSUNK
6x1/2", 6x3/4", 8x3/4"



ZINC RAISED COUNTERSUNK
6x1/2", 6x3/4", 6x1",
8x1/2", 8x3/4", 8x1",
8x1 1/2", 8x2",
10x3/4", 10x1"



BLACK PAN POZI
6x3/4", 8x3/4", 8x1"



Zinc Pan Pozi
6x1/2", 6x3/4", 6x1",
8x1/2", 8x3/4", 8x1",
8x1 1/2", 8x2", 10x1/2",
10x3/4", 10x1",
10 x 1 1/2", 10 x 2"



RAJ TEK SELF DRILLING
RAJTEK834 #8 x 3/4"
RAJTEK1034 #10 x 3/4"

SPIRE CLIPS



SNU1219
#6 Screw Size
11.2x16.5mm long
Hole centre 8mm to edge



SNU0536
#8 Screw Size
11.2x16.5mm long
Hole centre 8mm to edge



SNU1561
#8 Screw Size
11.2x24.4mm long
Hole centre 17mm to edge



SNU3489
#10 Screw Size
12.7x19.6mm long
Hole centre 11mm to edge



SNU0538
#12 Screw Size
15x26.2mm long
Hole centre 14mm to edge



14276
Nylon Fender / Wheel Housing
#14 Screw Size
20x29mm long
Panel Range up to 1mm
Hole centre 15mm to edge

NYLON SCREW GROMMETS



14750
Nylon Fender / Wheel Housing
#10 Screw Size
20x31mm long
Panel Range up to 1mm
Hole centre 11mm to edge



14255
#8 Screw Size
Head 9.5mm Square
Length 6mm
Fits 7mm Square Hole



759
#10 Screw Size
Head 11mm Square
Length 8mm
Fits 7mm Square Hole



R30
#10 Screw Size
Head 12mm Square
Length 10mm
Fits 7.5mm Square Hole



R33
#10 Screw Size
Head 13mm Square
Length 8mm
Fits 9mm Square Hole



14294
#6 Screw Size With Seal
Head 15mm Square
Length 12mm
Fits 7mm Square Hole



14281
#6 Screw Size With Seal
Head 14mm Dia
Length 10mm
Fits 7mm Square Hole



14268
#6 Screw Size
Head 14mm Dia
Length 15mm
Fits 7mm Square Hole



P247-851
#8 Screw Size
Length 17mm
Fits 8mm Square Hole
Toyota, Honda, Nissan



14275
#10 Screw Size
Head 18mm Dia
Length 17mm
Fits 8.5mm Square Hole



8418
#14 Screw Size
Head 17mm Dia
Length 6.8mm
Fits 10mm Square Hole



14267
#12 Screw Size
Head 20mm Dia Length 17mm
Fits 8mm square hole
Toyota

TRIM CLIP PLIERS 80° OFFSET



6644
Head - 22mm
Stem - 18mm
Hole - 12mm Ford Falcon



TCP80

- For the quick and damage free removal of push in plastic fasteners.
- 80° Degree offset head removes body clips in hard to get to places.
- Ideal for most late model expensive body clips.
- Spring loaded for ease of use.

Please Note:

The sizes given for the fasteners are approximations only for your assistance. We do not do cash refunds so please choose carefully.

NO PART OF THIS DOCUMENT MAY BE REPRODUCED, TRANSMITTED, TRANSCRIBED, STORED IN ANY LANGUAGE, IN ANY FORM BY ANY MEANS, WITHOUT THE PERMISSION OF RA JOHNSTONE & CO LTD. COPYRIGHT© 2013. WE RESERVE THE RIGHT TO WITHDRAW ANY PRODUCT FOR SALE.



Supplying Panelbeaters Since 1947

RA JOHNSTONE
RA JOHNSTONE & CO LTD

www.raj.co.nz

Phone: 09-25000 95

E - mail: sales@raj.co.nz

Address: 33 Ha Crescent, Wiri, Auckland

PLEASE NOTE:
Photos are not to scale.

CHART
G

1. BOLTS 2. NUTS 3. RIVETS 4. WASHERS 5. RIVNUT SETTING GUN



BOLTS



8005

Guard Bolt 5x20mm
Captive Washer
8mm Hex Head



8008

Black Guard Bolt 6x18mm
Captive Washer + Spring
Washer
10mm Hex Head



8009

Guard Bolt 6x20mm
Captive Washer + Spring
Washer
10mm Hex Head



8010BK

Black Guard Bolt 6x25mm
Captive Washer
10mm Hex Head



8025

Guard Bolt 8x25mm
Captive Washer + Spring
Washer
12mm Hex Head



8025B

Black Guard Bolt 8x25mm
Captive Washer + Spring
Washer
12mm Hex Head



8030

Guard Bolt 10x30mm
Captive Washer + Spring
Washer
14mm Hex Head



NUMBER PLATE BOLTS

M5x20mm NPB520 M6x10mm NPB610
M6x16mm NPB616 M6x20mm NPB620
M6x30mm NPB630



GUTTER BOLTS

Metric & Imperial
Various Sizes Available
Nuts Included



HIGH TENSILE SET SCREWS

Available in various Lengths
UNC: 1/4", 3/8", 5/16"
UNF: 1/4", 3/8", 5/16"
Metric: 5, 6, 8, 10mm

NUTS



P241-606

Metal
6mm Thread Size
Panel Range up to 4mm
Hole centre 13.5mm to edge



P241-607

Metal
6mm Thread Size
Panel Range up to 4mm
Hole centre 19.5mm to edge



P241-609

Metal
8mm Thread Size
Panel Range up to 4mm
Hole centre 14.5mm to edge



P241-608

Metal
8mm Thread Size
Panel Range up to 4.5mm
Hole centre 20mm to edge

WASHERS



FLAT

Various sizes
Imperial & Metric



FENDER

Various sizes
Imperial & Metric



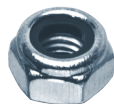
SPRING

Various sizes
Imperial & Metric



FLANGE HEAD NUTS

62F5 5mm Fits 8005 Guard Bolt
62F6 6mm Fits 8009 Guard Bolt
62F8 8mm Fits 8025 Guard Bolt
NUT8030 10mm Fits 8030 Guard Bolt
62F10 10mm Standard Flange Nuts



NYLOC NUTS



RIVNUT - LARGE FLANGE



RIVNUT - THIN FLANGE

RIVETS



11852

Peel Rivet-Metal
Ford 1/4" Diameter



66PEELLF

Peel Rivet
3/16x14mm
(9.6mm Grip)



TR454

Toyota Front
Bumper & Bumper
Stay



TR452

Toyota Rear
Bumper & Bumper
Stay



TR455

Toyota Floor Panel,
Front Fender, Mud
Guard



Truss Head



Large Head



Black Rivets

A large selection of various types and sizes of rivets are available 3/32", 1/8", 5/32", 3/16", 1/4"

RIVETING SYSTEM

GYS PRESS 8T



STAND FOR GYS PRESS 8T



RIVNUT SETTING GUN

Supplying Panelbeaters Since 1947
RA JOHNSTONE
RA JOHNSTONE & CO LTD

Please Note:

The sizes given for the fasteners are approximations only for your assistance. We do not do cash refunds so please choose carefully.

NO PART OF THIS DOCUMENT MAY BE REPRODUCED, TRANSMITTED, TRANSCRIBED, STORED IN ANY LANGUAGE, IN ANY FORM BY ANY MEANS, WITHOUT THE PERMISSION OF RA JOHNSTONE & CO LTD. COPYRIGHT© 2013. WE RESERVE THE RIGHT TO WITHDRAW ANY PRODUCT FOR SALE.